



**TECHNICAL RIDER  
AND FLOOR PLANS**



# TECHNICAL RIDER

## SECTION : STAGE

Playing Area : 29' 10" x 27' 06"  
Depth : 29' 06"  
Down stage to proscenium wall : 12' 00"  
Proscenium wall to back drop : 15' 06"  
Back drop to wall : 2' 00"  
Width of down stage : 30' 00"  
Width of proscenium wall : 29' 10"  
Height of proscenium : 18' 00"  
Height of Stage 2' 09"  
Height of grid : 42' 00"

## SECTION : FRONT OF HOUSE LIGHT RIGGING

A bridge 26' wide on the ceiling in the center of the room (+/- 45 degree angle)  
One pipe 15' long in front of the balcony in the center, 32' of the down stage, with a 15 degree angle relative to the center stage. A horizontal pipe 15' long each side of the room at the balcony.

**Note :** It is possible to hang a truss over the house (additional charge required for the rental and installation of the system). **Maximum ceiling height 45'**

## SECTION : GRID

Fifteen (15) battens to counterweight - maximum height: 44'06", with a maximum load capacity of 455 kg each. The cables are manoeuvrings at stage left. A 12x12" bridge on a 1 ton 32' engine.

## SECTION : HABILLAGE

Curtain velvet pleated golden color.  
Opening horizontally, Electric command from stage left or control room.  
Backdrop of black velvet.  
Two (2) pairs of leg drop of black velvet 6' x 23'.  
Two (2) borders of black velvet.

## SECTION : ELECTRICITY

Electrical plug located stage left.

### For lighting:

2 panels of 208 volts 3 phase 200 amps - Cam-lok plugs.

### For sound:

Cam-lok 60A 3 phase - 5 twist-lock 125-250V 30A  
8 U-ground 125V 15A - 1 U-ground 125V 20A - 1 twist-lock 125V 20A

**Stage right :** 1 U-ground 125V 15A

**Control room :** 1 twist-lock 125-250V 30A - 2 U-ground 125V 20A



## **SECTION : ACCESSORIES**

6 risers 4' x 8' by 12", 18" or 24" inches high  
1 black gala lectern VFI LE4001 with 2 microphones and lamp  
6 stools  
1 drum carpet  
3 ladders: 14 foot, 10 foot, 6 foot  
1 CD player Denon DN-C620  
1 CD recorder Fostex CR500  
1 communication base 2 channels Production Intercom MS-200  
1 wireless communication base Telex BTR800 + 4 wireless belt-Pack  
6 communication stations 2 channels + headsets  
1 telephone  
2 flashes

### **Extras**

On stage a Wendl & Lung grand piano 178-Mod Professional II (5'10") Black  
\$ 50.00 + tax  
In the lobby a Hardman grand piano (≈ 6 ') - Black - \$ 50.00 + tax  
Tuned piano \$ 130.00 + tax

### **Video :**

Digital projector EIKI - LCD WXGA - 5500 lumens  
hung at balcony may project onto the cinema screen or on the motorized screen  
at stage right : \$165,00 + tax  
Digital projector EIKI HDT30 - 8000 lumens  
Video switcher Kramer VP-728 (4 universal inputs, 2 VGA inputs, 2 HDMI inputs  
HDMI output to projector  
1 DVD player Denon DN-310  
motorized Screen 9'x12 'hung on the little balcony on stage right: \$ 105.00 + tax  
motorized Screen 9'x12 'on stage: \$ 105.00 + tax  
Cinema screen: \$ 100.00 + tax  
1 logitech remote for powerpoint  
1 multi-format video switcher Roland V-800HD  
1 server for 4 video out - DELL PRECISION R7910  
Powerpoint et ProPresenter softwares

## **SECTION : LIGHTING**

Lighting Console ETC Element 60 faders - 500 channels  
Lighting Console GrandMA2 Light  
96 dimmers Leviton i96e 2.4 KW  
48 ETC Sensor dimmers  
3 electric battens on stage (24 connections - TL3)  
Front of house pipe: 1 center and 2 sides (12 connections - TL3)  
1 bridge over proscenium (12 connections TL3)  
12 Lekos ETC Source Four varyfocal 15-30° 750W (Front of House)  
6 Lekos ETC Source Four varyfocal 25-50° 750W  
8 Lekos ETC Source Four 19° 750W  
8 Lekos ETC Source Four 26° 750W  
8 Lekos ETC Source Four 36° 750W  
8 Lekos ETC Source Four 50° 750W  
48 Par ETC Source Four 750W - Lenses available : Narrow, Medium, Wide, Very  
Narrow  
6 Frenels ETC Source four  
12 Theatrinx PAR 72 RGBA (Led)  
4 Atomic 3000  
Fog generator MDG Atmosphere  
DMX signal linking backstage stage left and right to the lighting console and  
dimmers  
6 x 4', 8' or 12' boom  
Lee gels inventory



## **SECTION : SOUND SYSTEM**

### **FOH PA system :**

Digico SD 9 console : 8 in - 8 out with stage Rack 32 in - 16 out  
Digiflex patch box 50 pairs (split snake)  
4 digiflex sub-snake 12 pairs  
Sub-snake 8-8 pairs from stage control room  
Sub-snake 12 pairs 25'  
2 x sub-snake 12 pairs 50'

### **FOH**

6 D&B Q1 speakers  
2 D&B Q10 speakers  
2 D&B D12 (Q1) amplifiers  
1 D&B D6 (Q10) amplifiers  
6 D&B Q-SUB speakers  
2 D&B D12 (Q-SUB) amplifiers  
4 D&B J-SUB speakers  
4 D&B D12 (J-SUB) amplifiers

### **Front fill**

2 D&B 5S speakers  
1 D&B D6 amplifiers

### **Balcony**

2 D&B Q10 speakers  
2 D&B Q7 speakers  
2 D&B 8S speakers  
3 D&B D12 amplifiers

### **Delays**

2 D&B 5S speakers  
1 D&B D6 amplifiers

### **Monitor**

Possibility of 6 mix  
8 D&B MAX wedges  
3 D&B D12 amplifiers



## **SECTION : SONORISATION**

### **Microphones**

2 Shure Bêta-91  
2 Shure Bêta -52A  
8 Shure SM-58  
2 Shure Bêta -58A  
5 Shure SM-57  
2 Shure Bêta -57A  
2 Sennheiser E906  
2 Sennheiser MD-421 U4  
2 Audio-technica PRO35  
4 Newman KM184  
4 Audio-Technica AT4041  
6 Sennheiser E904  
2 DPA 4099 violin clip(2), piano clip(2) cello clip(1) guitar clip(1) double bass clip(1)  
2 Shure Microflex 185 (lectern)  
4 wireless Shure UR124D/SM58-H4 (belt-pack or SM58) (extra \$46.50/each)  
4 Shure WBH53-Black (headset)  
4 active direct box Radial PRO48  
4 passive direct box Radial PRODI  
2 stereo direct box Radial PROD2  
2 Radial Twin Iso  
12 tall boom (black)  
12 small boom (black)  
2 round base table boom (black)  
2 tripod bas table boom  
2 straight boom (black)  
several XLR cables 10', 25' and 50'  
4 sub-snakes 4 XLR 10'  
4 sub-snakes 4 XLR 25'



## **SECTION : DRESSING ROOM**

Four (4) dressing rooms located on stage right and can comfortably accommodate 24 people. Includes 3 toilets, 1 shower, sinks and refrigerators.

## **SECTION : LOADING**

There is no dock for the theater. The truck must be parked in front of theater in the opposite direction of traffic and roll the equipments through a small alley to the left of the theater for a distance of 60' and we arrive at the low end of the stage. Note that the alley rises a little bit. For parking, it is possible to reserve a place for unloading the equipment, but eventually you need to pay (parking meters or the Municipal parking on Meadow street \$ 1.00 per hour).

## **SECTION : ACCESS ROAD**

From Montreal by Highway-10, take exit 143 (Highway-610, Fleurimont, East-Angus) Then take the next exit, 3 (St. Francois Blvd, downtown), turn left on Blvd. St. Francois and follow the river into town. At the second traffic light that you will meet, turn right on King, cross the bridge, and turn right on Wellington. The Theater is about 400' from the King/Wellington corner, on your left. You're in the right position for parking the truck because the theater is on your left and it is better to park at the opposite of traffic for unloading the truck. For people from Quebec, the A-55, go to the junction with the A-610 and take to A-610 and follow the same directions as mentioned above.

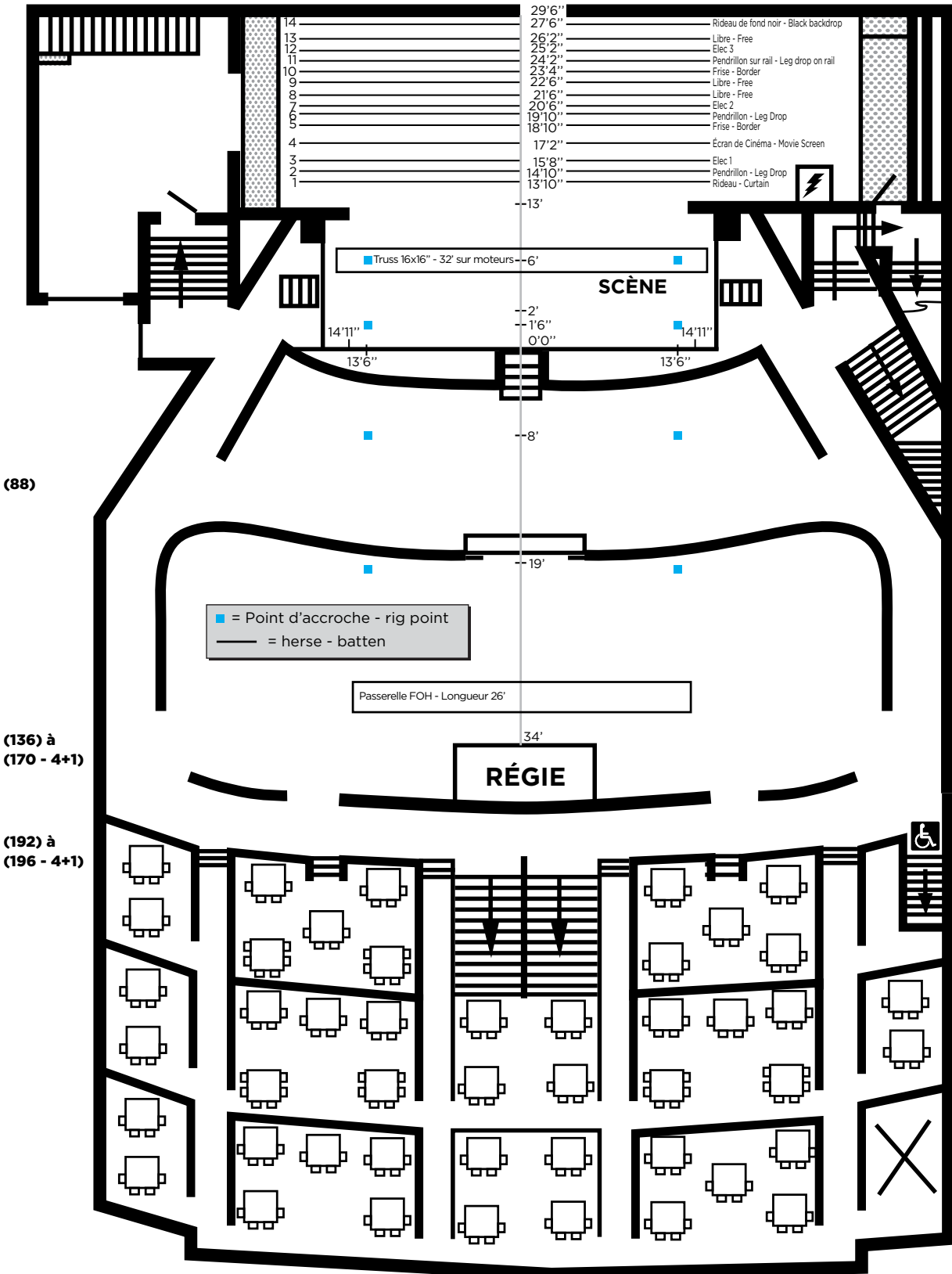


## GRID POSITION AND DISTRIBUTION

(\*Position measured from the front of stage)

GRID	POSITION	HANGING
1	13' 10"	Curtain (Permanent)
2	14' 10"	Borders
3	15' 8"	Electric 1, (24 circuits TL-3, 110v, 20amp) (Permanent)
4	17' 2"	Non available
5	18' 10"	Borders
6	19' 10"	Leg drop
7	20' 6"	Electric 2, (24 circuits TL-3, 110v, 20 amp) (Permanent)
8	21' 6"	Free
9	22' 6"	Screen 15'x30'
10	23' 4"	Free
11	24' 2"	Leg drop on traveller (Permanent)
12	25' 2"	Electric 3, (24 circuits TL-3, 110v, 20amp) (Permanent)
13	26' 2"	Free
14	27' 6"	Black curtain back drop
15	28' 4"	Non available

# TECHNICAL FLOOR PLAN

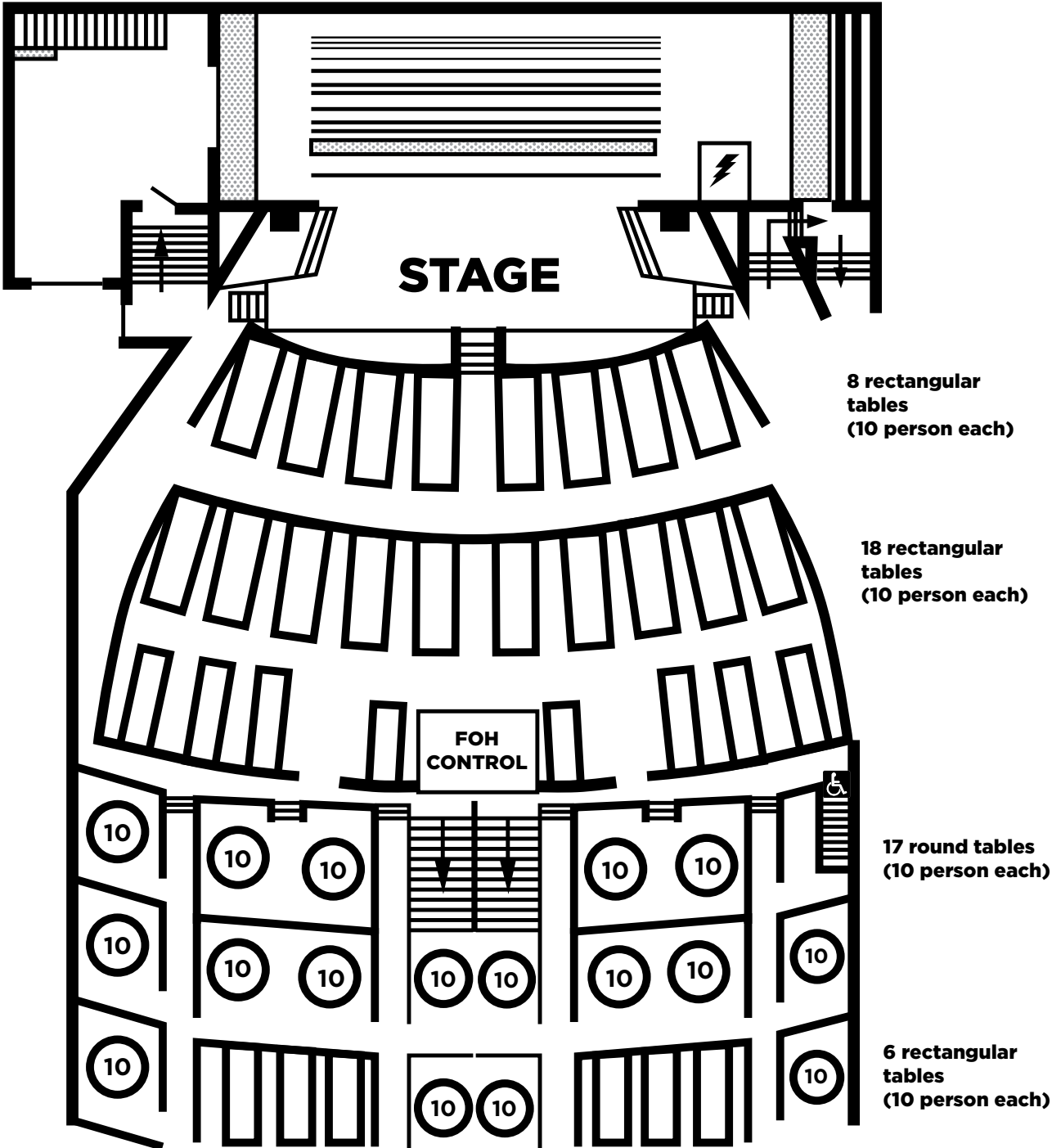




**FLOOR PLAN BANQUET SETUP - MAXIMUM CAPACITY**

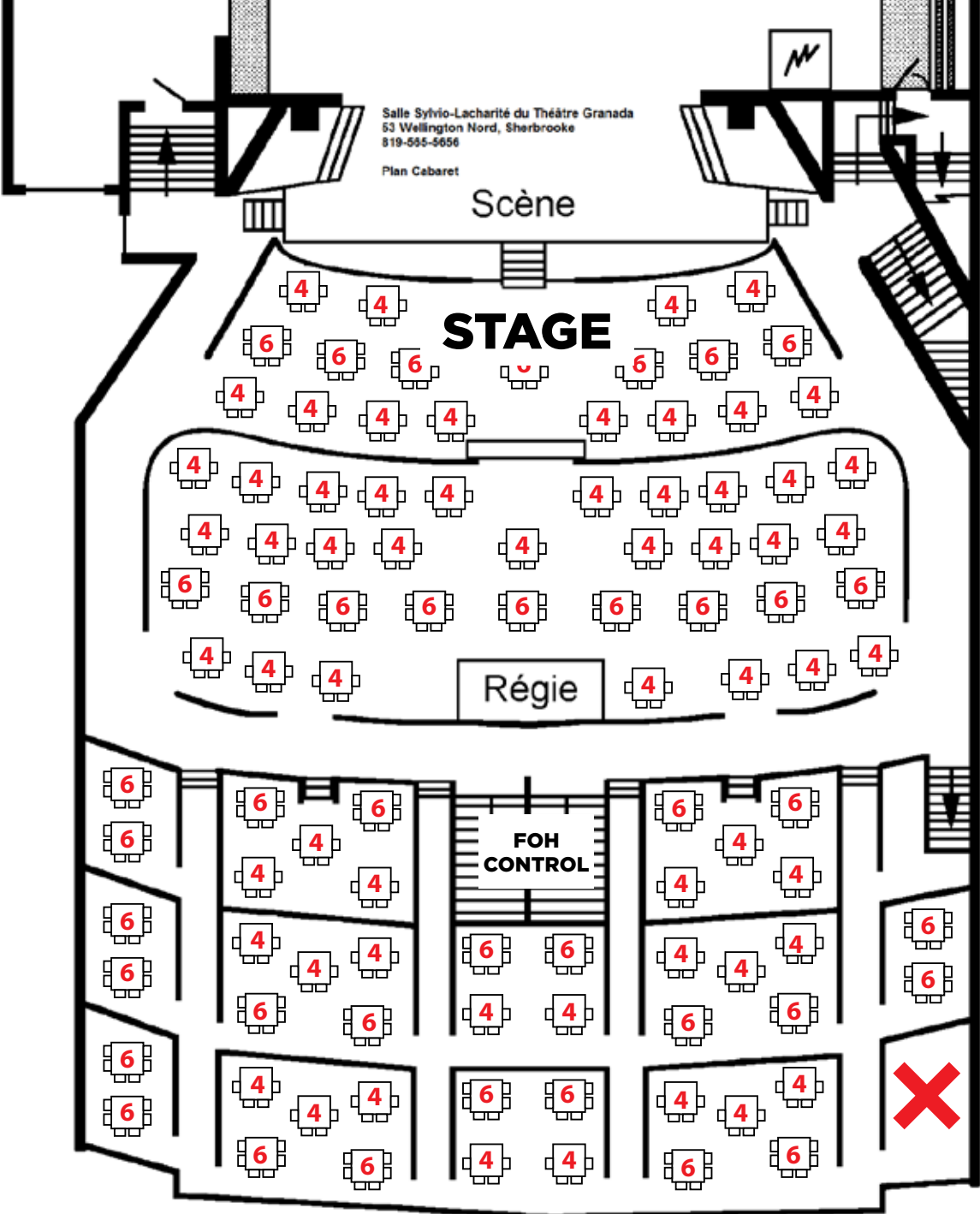
# 49 tables of 10 person each

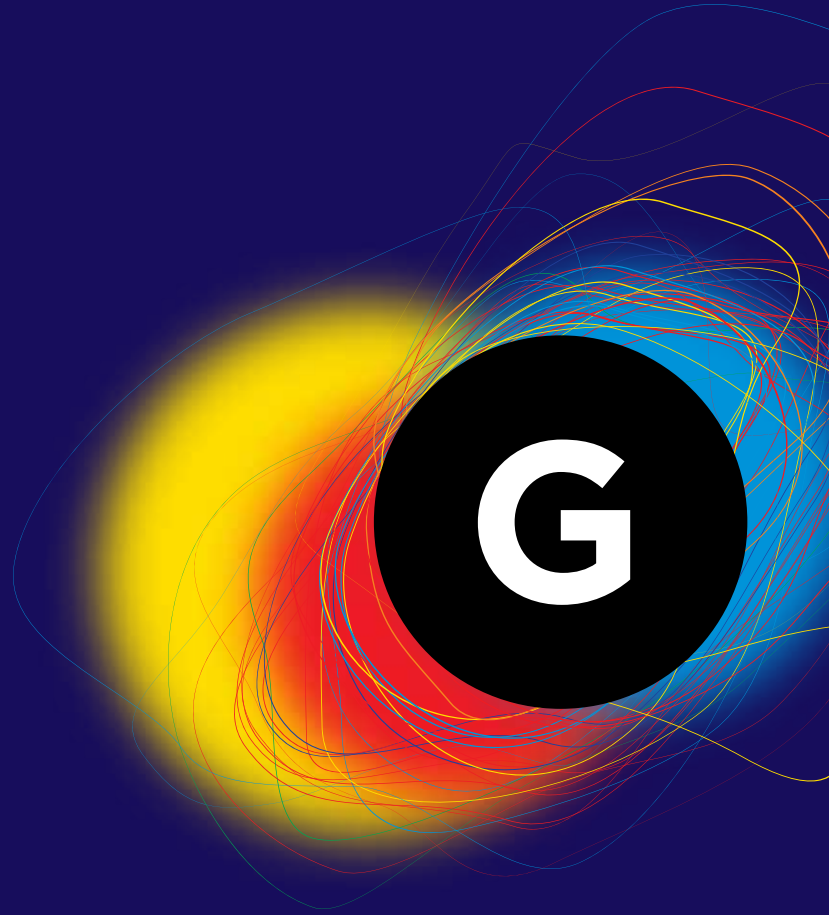
Floor plan | Banquet setup  
Maximum capacity (490 persons)



# FLOOR PLAN CABARET SETUP

Floor plan | Cabaret setup  
488 persons)





THÉÂTRE  
**GRANADA**

**53, Wellington N. street,  
Sherbrooke (QC) J1H 5A9**

**819 565-5656**